



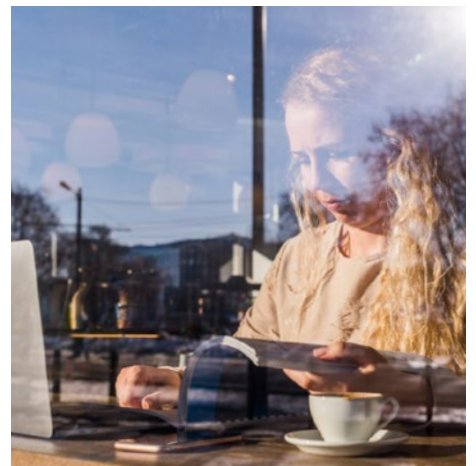
SECURE THE QUALITY OF DATA



A USB connected text scanner and digital highlighter designed to improve your workflow.

To bridge the gap between printed text and the computer C-Pen has developed the USB-connected digital highlighter TS1. Anything you highlight is instantly scanned and pasted into your computers' active application, like Word and Excel or your CRM or ERP system. Besides making your job easier, it also secures the quality of the data and reduces reading errors.

C-Pen TS1 (G2) is the successor of the original and popular TS1. We've secured the performance and updated the camera solution to also support very small font sizes.



C-Pen TS1 (G2) features

- High scan speed.
- High-resolution camera supporting very small font size.
- Fast real-time Optical Character Recognition (OCR) supporting 100+ languages in Latin, Cyrillic, or Greek alphabet. Text and numbers or numbers only.
- USB connectivity.
- Compatible with Windows and Mac OSX.
- Compatible with MS Office and endless other 3rd party text/data software.



Scanning pens are essentially digital highlighter or mark-up pens. But takes you one step further. A scanning pen digitizes the printed information and allows it to be processed further which makes it possible to use for multiple purposes. The ones important to us are productivity and learning.



cpen.com

“READ-ALoud TOOLS SUCH AS TEXT-TO-SPEECH CAN BE A KEY TO UNLOCKING A STUDENT’S POTENTIAL.” WOOD AND KEELOR, 2020



CONTENT OF BOX

- C-Pen TS1 (G2)
- Desk stand
- Quick start instructions
- Download C-PEN Core software from www.cpen.com

SUPPORTED LANGUAGES

All platforms support Latin, Cyrillic or Greek characters.

OCR languages:

Supports text and numbers in: Abkhaz, Adyghe, Afrikaans, Agul, Albanian, Altaic, Armenian (Eastern), Armenian (Grabar), Armenian (Western), Awar, Aymara, Azerbaijani (Cyrillic), Azerbaijani (Latin), Bashkir, Basque, Belarusian, Bemba, Blackfoot, Breton, Bugotu, Bulgarian, Buryat, Catalan, Chamorro, Chechen, Chukcha, Chuvash, Corsican, Crimean Tatar, Croatian, Crow, Czech, Danish, Dargwa, Dungan, Dutch, Dutch (Belgium), English, Eskimo (Cyrillic), Eskimo (Latin), Esperanto, Estonian, Even, Evenki, Faeroese, Fijian, Finnish, French, German, German (Luxembourg), German (new spelling), Greek, Guarani, Hani, Hausa, Hawaiian, Hungarian, Icelandic, Ido, Indonesian, Ingush, Interlingua, Irish, Italian, Kabardian, Kalmyk, Kara-Kalpak, Karachay-Balkar, Kasub, Kawa, Kazakh, Khakas, Khanty, Kikuyu, Lirgiz, Kongo, Koryak, Kpelle, Kumyk, Kurdish, Lak, Latin, Latvian, Lezgin, Lithuanian, Luba, Macedonian, Malagasy, Malay, Malinke, Maltese, Mansi, Maori, Mari, Maya, Miao, Minankabaw, Mohawk, Moldavian, Mongol, Mordvin, Nahuatl, Nenets, Nivkh, Nogay, Norwegian, Norwegian (Bokmål), Norwegian (Nynorsk), Nyanja, Occidental, Ojibway, Ossetic, Paiamento, Polish, Portuguese, Portuguese (Brazil), Provençal, Quechua, Romanian, Romanian (Moldova), Romansh, Romany, Ruanda, Rundi, Russian, Russian (old spelling), Sami, Samoan,

Scottish Gaelic, Selkup, Serbian, Serbian (Latin), Shona, Sioux, Slovak, Slovenian, Somali, Sorbian, Sotho, Spanish, Sunda Swahili, Swazi, Swedish, Tabassaran, Tagalog, Tahitian, Tajik, Tatar, Tinpo, Tok Pisi, Tongan, Tswana, Tun, Turkish, Turkmen, Tuvin, Udmurt, Uighur (Cyrillic), Uighur (Latin), Ukrainian, Uzbek (Cyrillic), Uzbek (Latin), Visayan, Welsh, Wolof, Xhosa, Yakut, Zapotec, Zulu.

TECHNICAL SPECIFICATION

- Size 117 x 14 x 22 mm, weight 50g
- Scanning speed up to 20 cm/s
- Multi-mode CMOS camera supporting 600+ dpi
- Character size 3-24 points
- Scan languages: Close to any language with Latin, Greek and Cyrillic characters
- USB 2.0 Full speed connectivity

C-Pen is the original high-quality state-of-the-art pen scanner. Founded in 1998 in Lund, Sweden, we develop and manufacture industry-leading scanning solutions that make it easy to process printed text, empowering people's ability to read, understand and learn.



cpen.com